

Inks Ranch Climbing Map

www.accessfund.org/inksranch

Access Fund is the national advocacy organization that leads and inspires the climbing community toward sustainable access and conservation of the climbing environment.



Protect America's Climbing

Ranch Rules

Inks Ranch is only open to the public for special events. 'At will' public access is not permitted.

Rock climbing is allowed from sunrise to sunset within the "Climbing Area", only.

Do not climb on Closed Projects.

Camp and park in approved areas, only. Technical 4x4 off-roading is not permitted.

Pack out what you pack in.

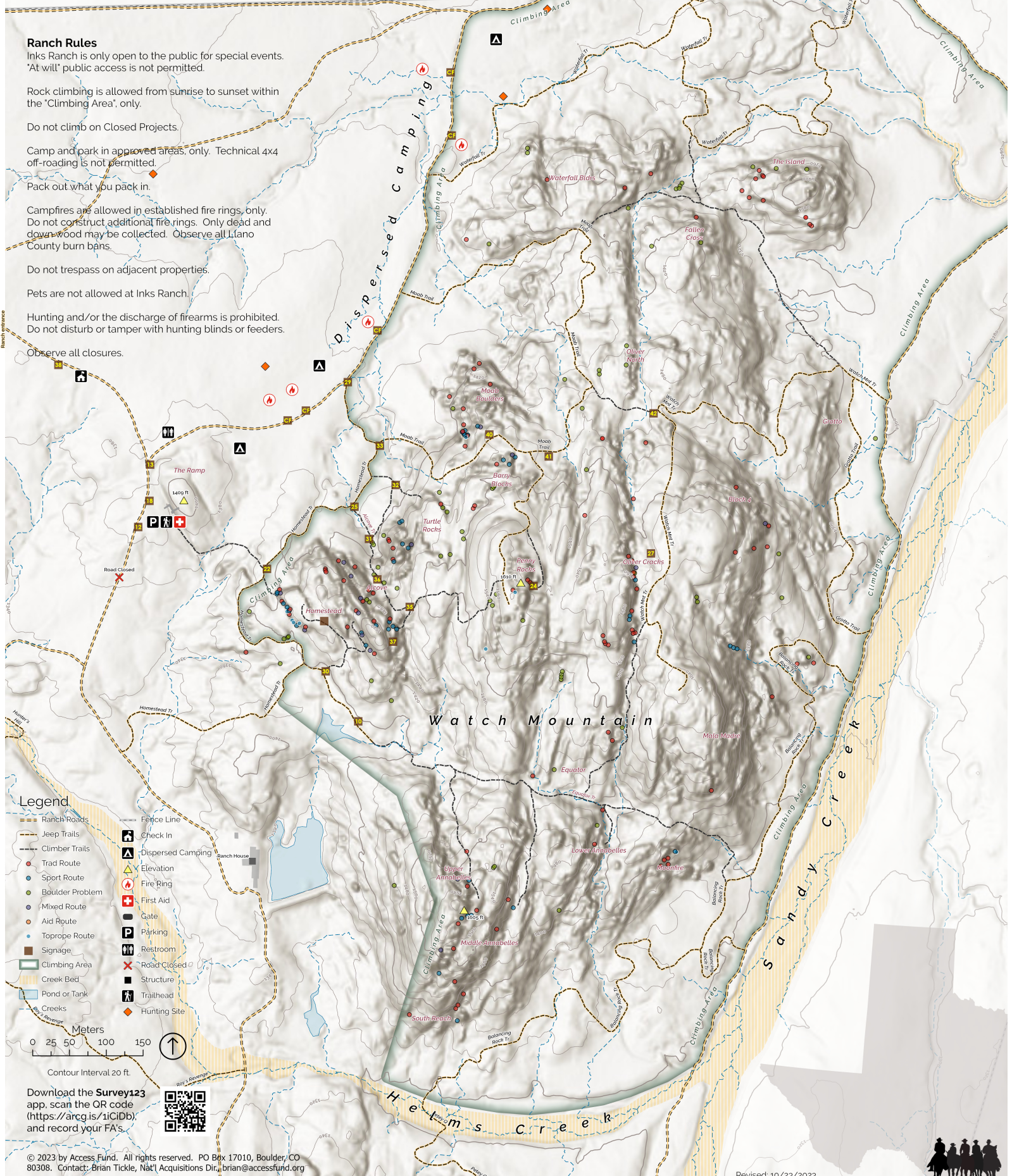
Campfires are allowed in established fire rings, only. Do not construct additional fire rings. Only dead and down wood may be collected. Observe all Llano County burn bans.

Do not trespass on adjacent properties.

Pets are not allowed at Inks Ranch.

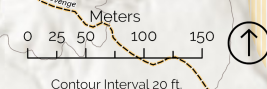
Hunting and/or the discharge of firearms is prohibited. Do not disturb or tamper with hunting blinds or feeders.

Observe all closures.



Legend

- Ranch Roads
- Jeep Trails
- Climber Trails
- Trad Route
- Sport Route
- Boulder Problem
- Mixed Route
- Aid Route
- Toprope Route
- Signage
- Climbing Area
- Creek Bed
- Pond or Tank
- Creeks
- Fence Line
- Check In
- Dispersed Camping
- Elevation
- Fire Ring
- First Aid
- Gate
- Parking
- Restroom
- Road Closed
- Structure
- Trailhead
- Hunting Site



Download the **Survey123** app, scan the QR code (<https://arcg.is/1CiDb>), and record your FA's.

